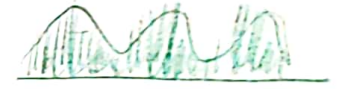


V19: Teslastrafo

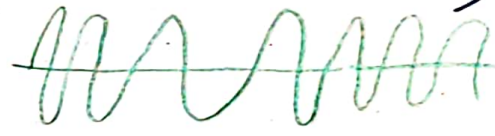
Amplituden-  
modulation  
AM



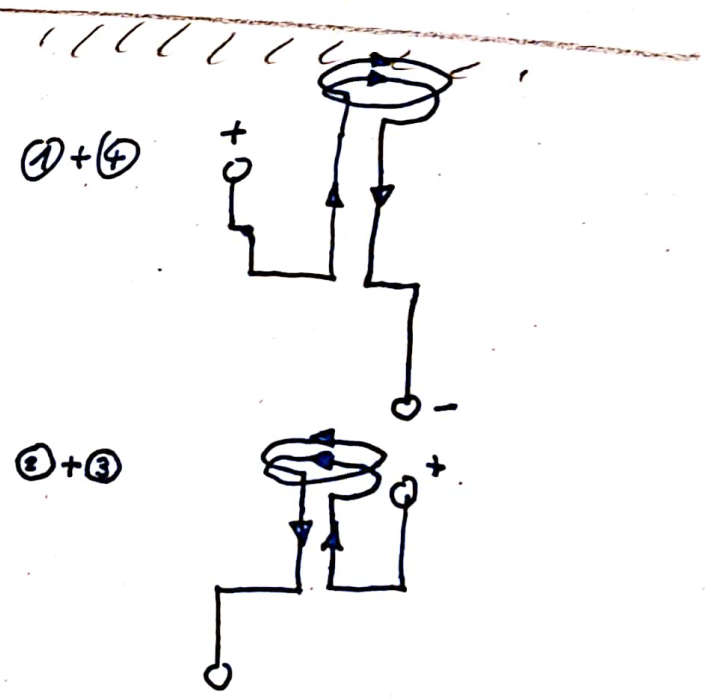
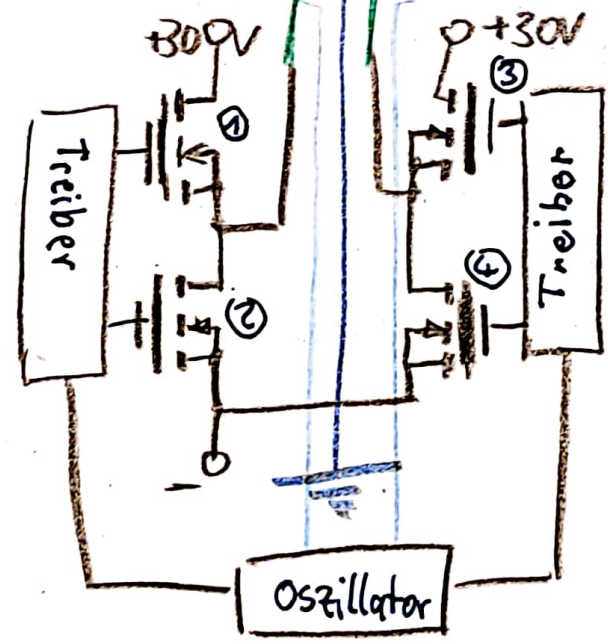
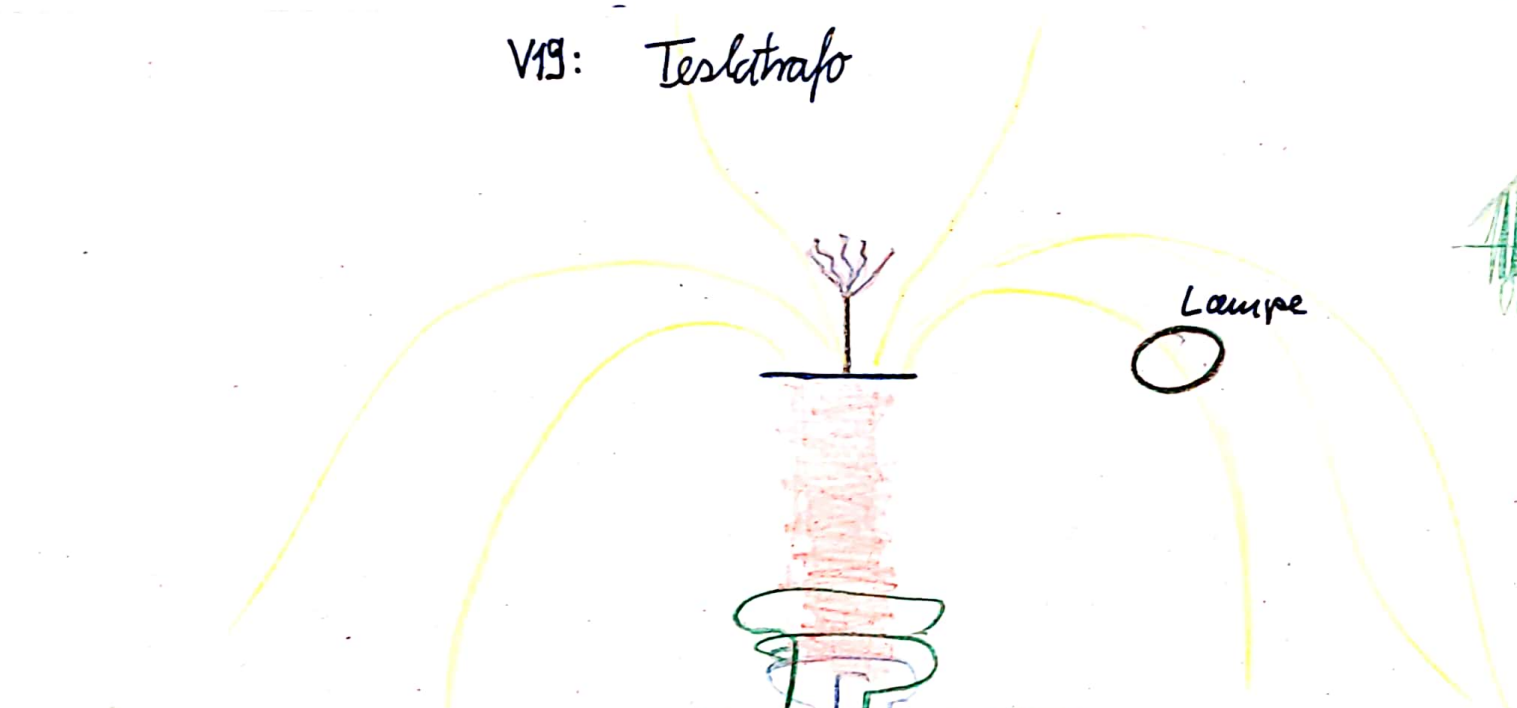
Demodulation



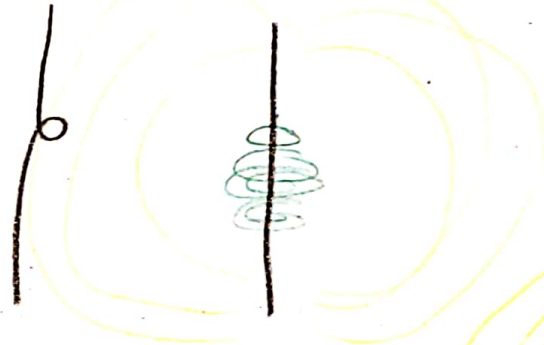
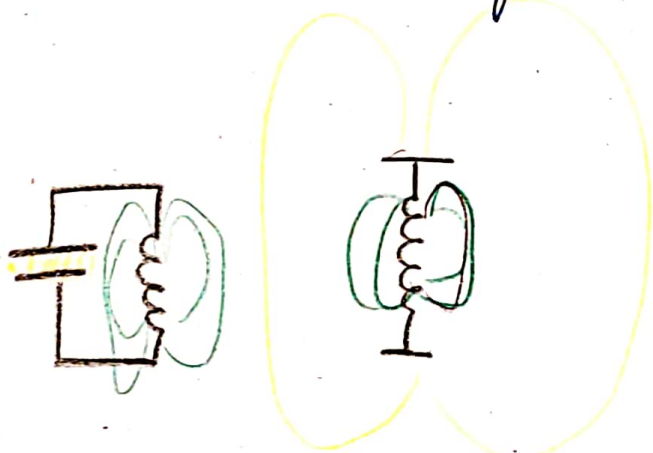
FM (Frequenzm.)



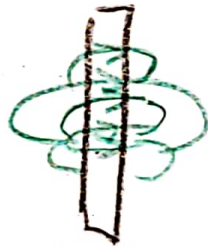
Lampe



Vom Schwingkreis zum Dipol



Dipol



$$\lambda = 1,5 \text{ m} \hat{=} 100 \text{ MHz} = 100\,000\,000 \text{ Hz}$$

elektromagnetische Welle



breitet sich mit  
Lichtgeschwindigkeit  $c = 300\,000 \frac{\text{km}}{\text{s}}$   
aus,

wechselndes elektrisches Feld  
erzeugt Magnetfeld  
wechselndes Magnetfeld induziert  
elektrisches Feld

→ Welle erhält sich